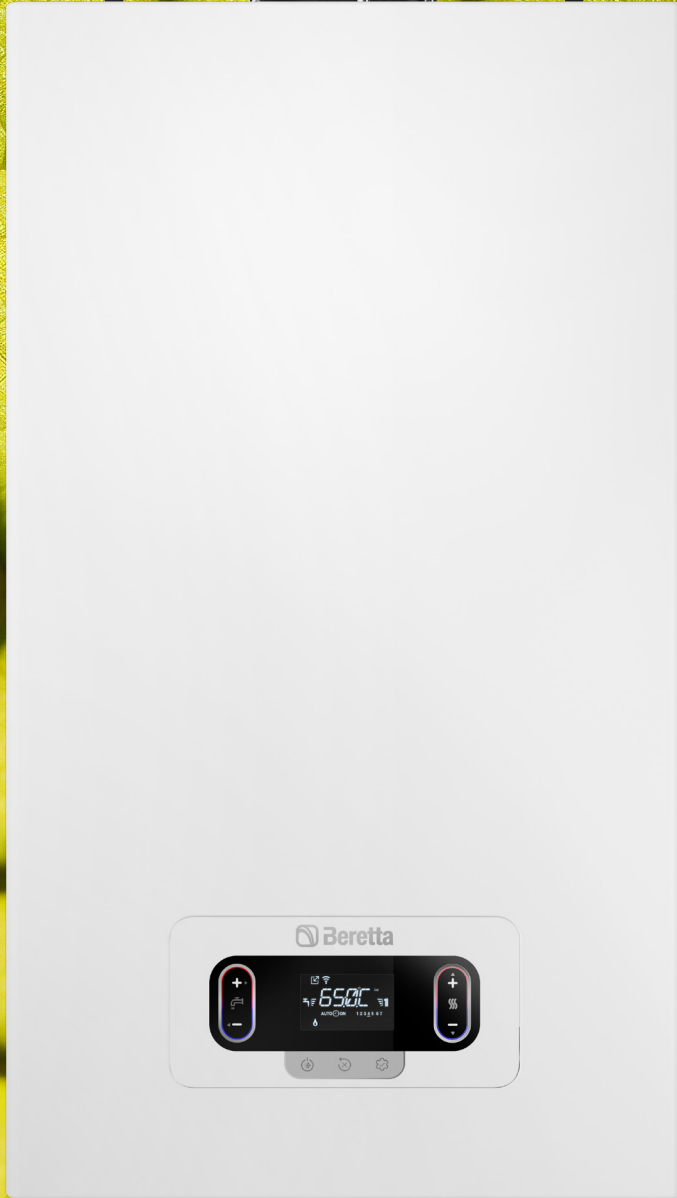


**NEW**

**WALL-HUNG CONDENSING BOILERS**  
with stainless steel heat exchanger



**archiproducts**  
AWARDS  
2023 WINNER

**archiproducts**  
AWARDS  
2023 WINNER  
SUSTAINABILITY

# MYNUTE EVOX

A Carrier Company

 **Beretta**



## THE RANGE

MYNUTE EVO X range consists of 5 models, to satisfy the different comfort needs:

- **MYNUTE EVO X 20R** (heating only model)
- **MYNUTE EVO X 25C** (combi model)
- **MYNUTE EVO X 30C** (combi model)
- **MYNUTE EVO X 30R** (heating only model)
- **MYNUTE EVO X 35C** (combi model)

Thanks to the ACC adaptive system, no dedicated codes are needed in case of LPG, because the new MYNUTE EVO X is able to automatically adapt its operation to the type of fuel. All models are also certified for use with air propane.

# MYNUTE EVO X, INNOVATION AND EFFICIENCY FOR A RELIABLE COMFORT.



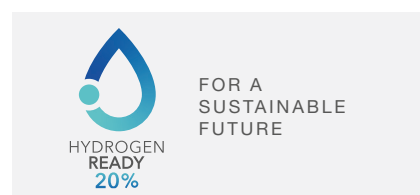
MYNUTE EVO X REPRESENTS THE LATEST EVOLUTION OF MYNUTE, ONE OF THE MOST REPRESENTATIVE BERETTA WALL-HUNG BOILERS FAMILIES IN TERMS OF RELIABILITY AND PERFORMANCE.

Deeply renewed in technology and design, MYNUTE EVO X features **different advantages compared with the previous series: from the wide modulation range 1:10 on all models, to the new heat exchanger in stainless steel with renewed adaptive combustion system and up to the new touch control**, just to mention the main ones.

Common denominator of the entire range is the **technological research aimed at saving energy, while offering higher comfort**: from silent operation to performance, there are many improved features of MYNUTE EVO X, which the user will not fail to appreciate.







The new range comes in completely renewed aesthetic lines, conveying a **modern and evolved character**, which harmonizes easily in different residential settings, both in replacement and in the new building.

Moreover, like all Beretta boilers of the new generation, MYNUTE EVO X is oriented towards the future: it is in fact **suitable to operate with blends of natural gas and hydrogen up to 20%**, thus helping to reduce the impact on environment and the emissions of condensing boilers in the coming years.




# STYLISH DIGITAL TOUCHPAD INTERFACE

### COMMUNICATION THROUGH ICONS

	DHW request ongoing		Generic alarm
	CH water pressure alarm		Maintenance - flashing with bell icon for alarm
	CH request ongoing		Flame presence or flame block

MYNUTE EVO X features a **new digital touchpad interface characterized by an eye-catching design**, in line with the current aesthetic standards. Designed with a particular attention to ease of use, the control panel of MYNUTE EVO X provides **user-friendly access to all boiler and system settings and parameters** through a simple “touch” on seven points of its surface.

**Each touch activates a buzzer**, that generates an acoustic feedback as a confirmation of the operation. The **2,8” HMI display** communicates with the user and the installer through icons, allowing an immediate understanding of the displayed function.



Navigation directions > <

Navigation directions ^ v

Domestic Hot Water temperature setpoint regulation +/-

Central Heating temperature setpoint regulation +/-

Boiler operation status (OFF/SUMMER/WINTER)

RESET of any alarm status/ Vent cycle interruption

INFO/ ENTER/ Parameters MENU

# Hi Comfort, COMFORT AT YOUR FINGERTIPS

MYNUTE EVO X is suitable with Hi, Comfort IoT platform solutions, available as accessories, that allow to manage your home comfort in a simple and intuitive way via App.

## Hi, Comfort T100

The platform includes the **Hi, Comfort T100**, which can function as a traditional thermostat or be used in smart mode through the Hi, Comfort App, when paired with the Hi, Comfort G100-W Wi-Fi Box. The App is available for free on Android and iOS systems and enables users to **remotely monitor the status, control the temperature of hot water and adjust**

**boiler settings** securely and easily. **Installing the Hi, Comfort T100 is a quick and uncomplicated process**, and it does not require any modifications to the electrical system if replacing an old thermostat. The T100 is powered by batteries and can be installed wirelessly if the installation is equipped with a radio frequency receiver.

## Hi, Comfort T300\*

MYNUTE EVO X is compatible with Hi, Comfort T300, the new room control featuring an elegant and modern design, which integrates advanced functions, up to the management, even remotely, of a hybrid system. The new advanced room control, with integrated gateway, can manage up to 3 zones through expansion cards and, in the case of a hybrid installation, operates as a true System Manager, for optimized consumption. All this also via Hi, Comfort App.



Hi, Comfort T300\*

\* Available from 2.nd quarter 2024

## Hi, Comfort K100

Finally, the Beretta MYNUTE EVO X range comes ready for the **Hi, Comfort K100 Smart Key**, an accessory designed for the latest generation of Beretta boilers. The Key connects the boiler to the internet without the need to replace an old thermostat already installed (even if ON/OFF). **Through the proprietary App Hi, Comfort, it is**

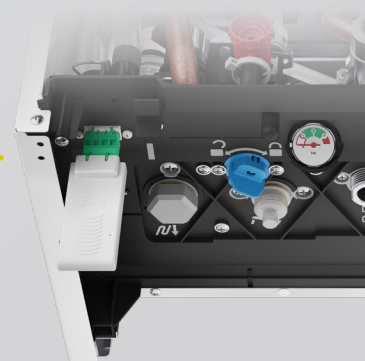
**possible to program the profile of the heating system from a mobile phone or tablet, find out the operating status parameters and activate special functions for domestic hot water production** (“baby bottle”, “cooking” and “wellness”), thus remotely.



Hi, Comfort

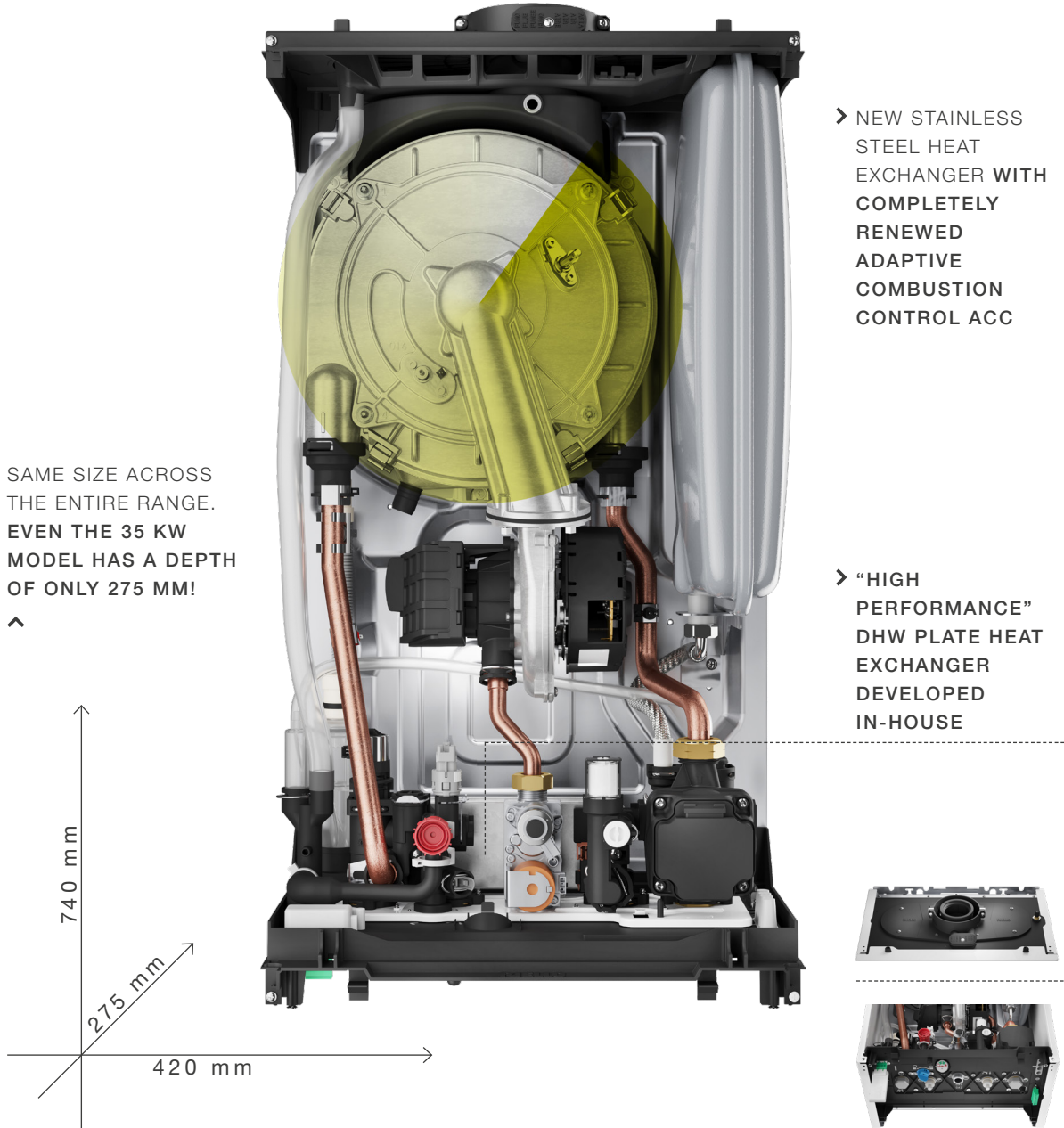


Easy and fast connection, by inserting the **K100 Smart Key** in the connector



**FOR MORE DETAILS ON Hi, Comfort SOLUTIONS  
PLEASE VISIT THE SITE [WWW.HI-COMFORT.COM](http://WWW.HI-COMFORT.COM)**

# HIGH EFFICIENCY FOR ENERGY SAVING



SAME SIZE ACROSS THE ENTIRE RANGE. EVEN THE 35 KW MODEL HAS A DEPTH OF ONLY 275 MM!



- ▶ NEW FLUE FLANGE FEATURING FAST AND SAFE, CLICK-FIT CONNECTIONS.
- ▶ LOW NOX EMISSIONS: CLASS 6 (EN 15502)
- ▶ HIGH MODULATION RATIO 1:10 ON THE WHOLE RANGE, FOR HIGH ENERGY SAVING
- ▶ ENERGY EFFICIENCY 93%
- ▶ SIDE EXPANSION VESSEL 9 LITRES

- ▶ TOP COVER AND BOTTOM SHELF MADE OF NEW CO-MOLDED MATERIALS TO HELP DURABILITY AND STRENGTH
- ▶ NEW MODULAR DIGITAL LOW ENERGY CIRCULATOR
- ▶ NEW HYDRAULIC GROUP WITH DIN TYPE CONNECTIONS SEQUENCE FOR EASY REPLACEMENT



**STAINLESS STEEL  
HEAT EXCHANGER**



**HIGH EFFICIENCY**



**QUICK AND STABLE  
HOT WATER**



**LOW NOISE OPERATION**



**EASY  
HANDLING AND  
TRANSPORTATION**



**QUICK AND EASY  
INSTALLATION**



**FRONTAL ACCESS  
TO COMPONENTS**



**HYBRID READY  
AS AN OPTION**

## NEW ADAPTIVE ELECTRONIC COMBUSTION CONTROL



MYNUTE EVO X is equipped with a completely new intelligent combustion control system ACC (Active Combustion Control), which **can automatically adapt to the fuel (natural gas, LPG, etc.)** without use of specific codes or accessory conversion kits. **This innovative and sophisticated combustion control allows self-adjustment of combustion**, eliminating the need for initial calibration. The ACC system is also capable of adapting the boiler to operate with different configurations of gas, different pipe lengths and at different altitudes (within the allowed design limits). The ACC is also capable of self-diagnostics so that **combustion is always under control**, with emissions consistently well below regulatory limits.

### “HIGH PERFORMANCE” DHW PLATE HEAT EXCHANGER

The MYNUTE EVO X “high performance” DHW exchanger, developed in-house, offers **excellent comfort, along with rapid set point attainment and temperature stability during drawing.**

### SILENT OPERATION

Thanks also to the new materials introduced, **MYNUTE EVO X stands out for its silent operation**, an improved feature if compared to the previous homonymous range and particularly appreciable in the case of installation of the boiler inside the home. In fact, the noise level ranges from 45 db(A), for the 30C model, up to 48 db(A) for the 20R model.

### EASE OF INSTALLATION AND MAINTENANCE

The ACC system simplifies installation. During first ignition, **the new boiler does not require calibration** and it is sufficient to select the type of fuel gas used by the boiler via the interface, if different from the default (natural gas). The **small size and light weight make the product easily transportable during installation. Frontal accessibility to the components** also makes the product easier to maintain for the technician in charge, speeding up his intervention time.

### INTEGRATION IN HYBRID SYSTEMS

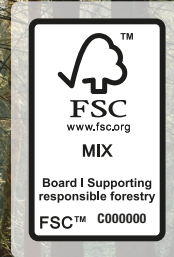
MYNUTE EVO X can be integrated into Beretta’s multi-energy systems (gas/electricity and renewables), through the offer of Hi, Comfort platform accessories.

# NEW SUSTAINABLE AND RECYCLABLE PACKAGING

Beretta's ongoing commitment to creating heating solutions that care about people and the environment now extends to packaging. MYNUTE EVO X, like all new generation Beretta boilers, is **packaged in FSC-certified, plastic-free and fully recyclable cardboard**, a further contribution to minimizing the environmental impact of our products.

**THE CARDBOARD PACKAGING OF MYNUTE EVO X IS MADE FROM A MIXTURE OF MATERIALS FROM FSC-CERTIFIED FORESTS, RECYCLED MATERIALS AND/OR FSC CONTROLLED WOOD.**

*FSC (Forest Stewardship Council) is currently 'the most accredited forest certification system in the world in terms of number of certificates issued, robustness of the certification criteria and companies involved in the processes.'*



**REDUCED CONSUMPTION**



**PLASTIC FREE PACKAGING**



**HYDROGEN-READY 20%**



**COMPOSTABLE SLEEVE**



**ENERGY SAVING**



**PRODUCT RECYCLABILITY**

The packaging of MYNUTE EVO X is 'plastic free', as the plastic of the elements commonly used for packaging has been completely removed and replaced with compostable materials.

The packaging of MYNUTE EVO X also becomes a vehicle of communication, aimed at informing and sensitizing the user on the important issue of respecting the environment. On both sides of the box some icons, symbolically flanked by a stylized leaf, illustrate the features of MYNUTE EVO X and its packaging helping to reduce the product's carbon footprint.

## PRODUCT RECYCLABILITY

Special attention is also paid to end-of-life product recycling, through the **declaration of the recyclability index of the product on the packaging**, equal to 78% on MYNUTE EVO X, an indicator which expresses the degree of material recovery, the so-called Secondary Raw Materials (MPS), useful to be reused in the production of new goods, thus **contributing to the reduction of carbon footprint**.

*The product recyclability index was derived from internal estimates based on an independent study conducted in 2022 on a condensing boiler, Model 20139525 Residence 25 Kis\* (DOMESTIC AEE belonging to Grouping R4 of the WEEE regulations according to Il D.Lgs. 49/2014), by ECOPEL, the Italian Consortium for the Management of Waste of Electrical and Electronic Equipment (WEEE), Batteries and Accumulators (Ri.P.A.) and Sports and Leisure Equipment.*



# A SUSTAINABLE FUTURE IS STARTING NOW

The MYNUTE EVO X range is designed to operate with blends of natural gas and hydrogen, up to a maximum of 20%: a first important step towards the objectives of environmental sustainability, in the decarbonisation process started by the European Union.

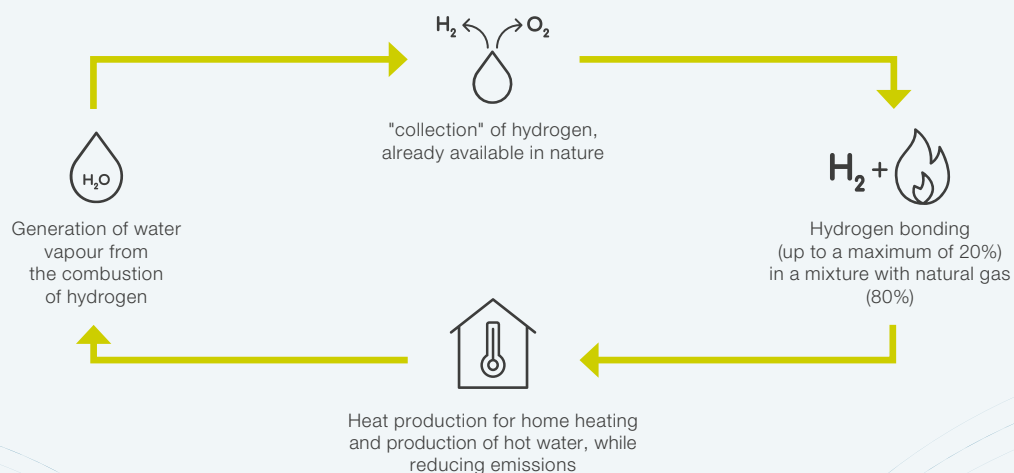
## ROADMAP TO HYDROGEN 100%

And there's more. Beretta now aims to the use of pure hydrogen as an energy source completely CO<sub>2</sub>-free. To this purpose, the new MYNUTE EVO X range has been tested to operate with 100% hydrogen combustion via a conversion kit, currently under development in our laboratories.

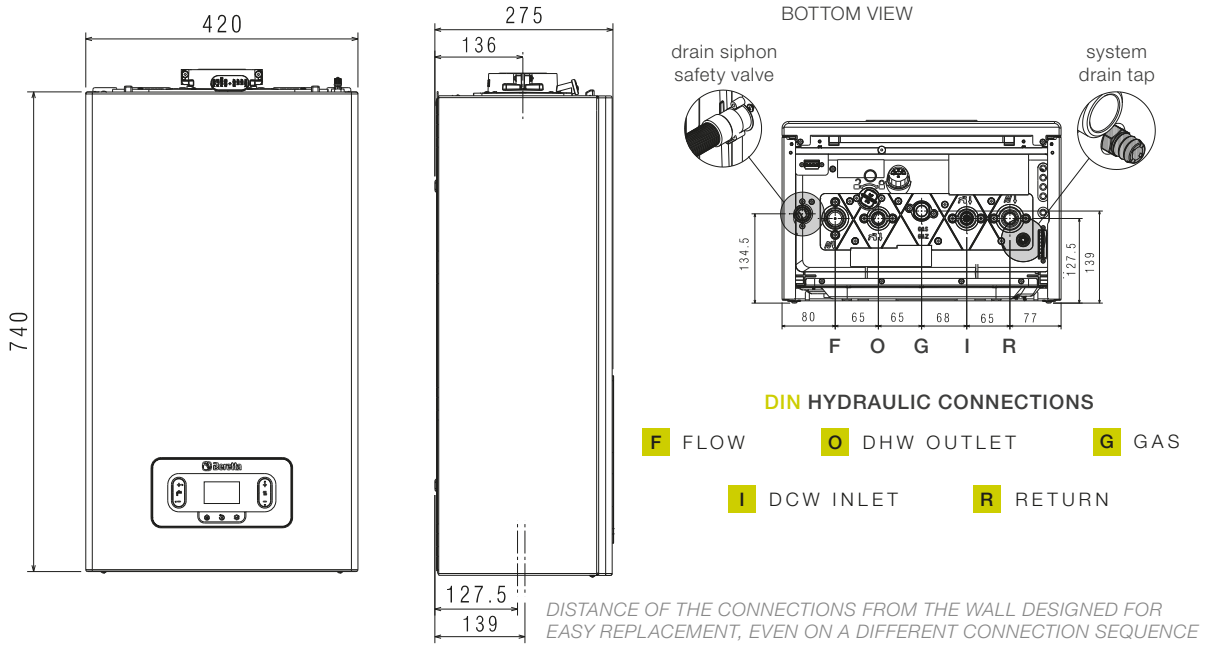
## THE CYCLE OF HYDROGEN USE

Hydrogen is a safe and clean gas, available in huge quantities in nature. Mixed with natural gas up to a ratio of 20 to 80%, hydrogen allows to generate heat and hot water, helping to minimise emissions. From the combustion of oxygen and hydrogen, and in the amount of the latter, water vapour is generated: in this way hydrogen turns back to water, its most common source, and reintroduced into nature.

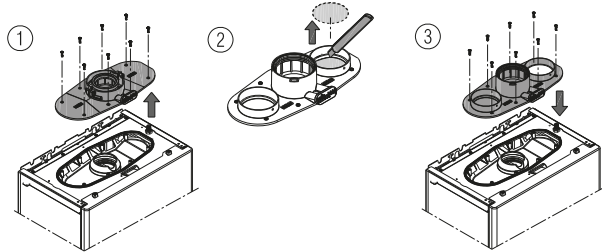
- Availability in huge quantities
- Production by low-impact and sustainable methods from renewable sources, such as wind, photovoltaics, and biomass energy
- Emissions reduction
- Real opportunity for change to start the decarbonisation process, fight global climate change, and improve the quality of air and life.



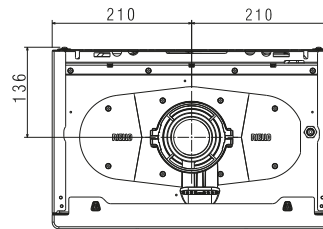
# TECHNICAL DRAWINGS



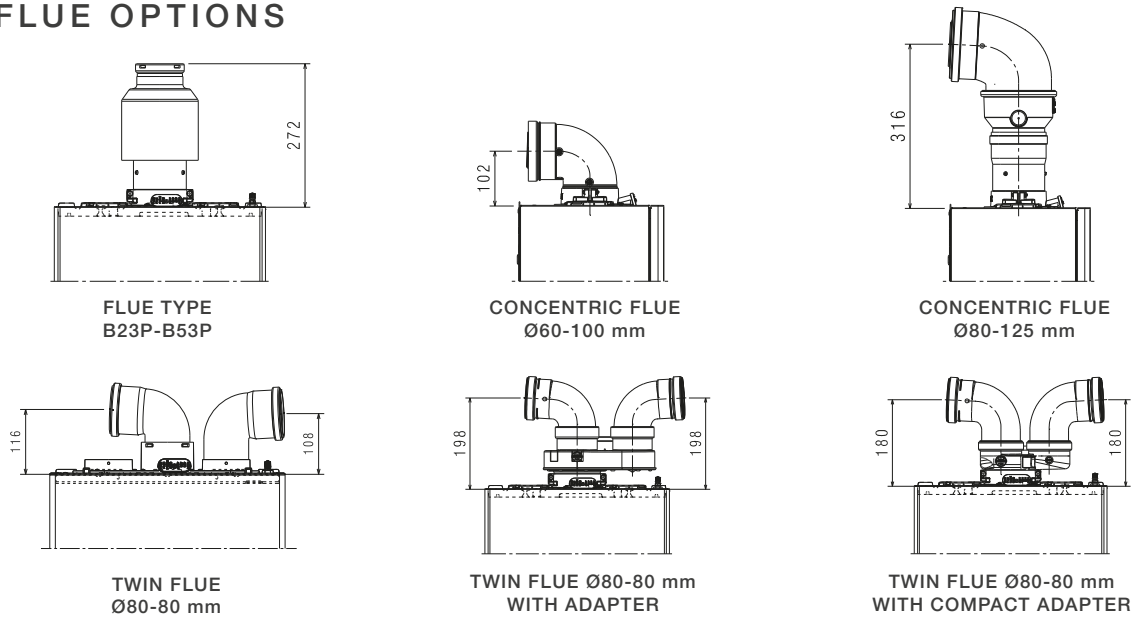
## FLUE GAS FLANGE DISASSEMBLY



## TOP VIEW



## FLUE OPTIONS



# TECHNICAL DATA



## ENERGY LABELLING SPECIFICATIONS (according to ErP regulations)

		UOM	25 C	30 C	35 C	20 R (*)	30 R (*)
Seasonal space heating energy efficiency class			A	A	A	A	A
Water heating energy efficiency class			A	A	A	-	-
Rated heat output	pnominal	kW	20	24	29	20	29
Seasonal space heating energy efficiency	ηs	%	93	93	93	93	93
<b>USEFUL HEAT OUTPUT</b>							
At rated heat output, high-temperature regime (**)	P4	kW	19,5	24,4	29,3	19,5	29,3
At 30% of rated heat output and low-temperature regime (***)	P1	kW	6,5	8,2	9,8	6,5	9,8
<b>USEFUL EFFICIENCY</b>							
At rated heat output and high-temperature regime (**)	η4	%	87,9	87,9	87,9	87,9	87,9
At 30% of rated heat output and low-temperature regime (***)	η1	%	98,0	98,0	97,9	98,0	97,9
<b>AUXILIARY ELECTRICITY CONSUMPTION</b>							
At full load	elmax	W	30,0	31,1	44,3	30	44,3
At part load	elmin	W	12,2	13,3	13,6	12,2	13,6
In Stand-by mode	PSB	W	3,7	3,7	3,7	3,7	3,7
<b>OTHER PARAMETERS</b>							
Stand-by heat losses	Pstby	W	29,9	35,2	35,2	29,9	35,2
Annual energy consumption	QHE	GJ	60,0	76,0	91,0	60,0	91,0
Sound power level, indoors	LWA	dB	48,0	45,0	47,0	48,0	47,0
NOx emissions	NOx	mg/kWh	22,0	19,0	35,0	22,0	35,0
<b>FOR COMBINATION HEATERS</b>							
Declared load profile			XL	XL	XL	/	/
Water heating energy efficiency	ηwh	%	85	85	87	/	/
Daily electricity consumption	Qelec	kWh	0,173	0,138	0,102	/	/
Daily fuel consumption	Qfuel	kWh	23,014	23,010	22,524	/	/
Annual electricity consumption	AEC	kWh	38	30	22	/	/
Annual fuel consumption	AFC	GJ	17	17	17	/	/
<b>OTHER SPECIFICATIONS</b>							
CH Heat INPUT (max-min)		kW	20,0- 2,5	25,0- 3,0	30,0-3,5	20,0-2,5	30,0-3,5
DHW heat nominal INPUT (max-min)		kW	25,0-2,5	30,0- 3,0	34,9-3,5	20,0-2,5	34,9-3,5
Power supply voltage		V-Hz	230-50	230-50	230-50	230-50	230-50
Degree of protection		IP	IPX5D	IPX5D	IPX5D	IPX5D	IPX5D
NOx class			6	6	6	6	6
<b>CH</b>							
Max pressure-temperature		bar-°C	3-90	3-90	3-90	3-90	3-90
Pump: max available head (flow rate 1000 l/h)(****)		mbar	400	400	400	400	400
Membrane expansion tank		l	9	9	9	9	9
<b>DHW</b>							
Max pressure		bar	8	8	8	/	/
DHW production at ΔT=25°C / 30°C / 35°C		l/min	14,3/11,9/10,2	17,2/14,3/12,3	20,0/16,7/14,3	/	/
DHW minimum flow rate		l/min	2	2	2	/	/
<b>GAS, CONNECTIONS</b>							
Inlet gas pressure (G20-G31)		mbar	20-37	20-37	20-37	20-37	20-37
CH Flow - Return / Gas inlet		Ø	3/4"	3/4"	3/4"	3/4"	3/4"
DHW Inlet - Outlet / DHW tank Flow - Return		Ø	1/2"	1/2"	1/2"	3/4"	3/4"
<b>DIMENSIONS, WEIGHT</b>							
Boiler dimensions (HxDxW)		mm	740x275x420	740x275x420	740x275x420	740x275x420	740x275x420
Net weight		kg	29	30	30	28	29
<b>FLUE PIPES AND AIR INTAKE</b>							
Max length for concentric flue (Ø60-100 mm)		m	10	8	8	10	8
Max length for twin flue (Ø80 + 80 mm)		m	69+69 (A)	36+36 (B)	36+36 (B)	69+69 (A)	36+36 (B)

(\*) The 'Only heating' models are supplied with a three-ways valve. Filling tap is not available.

(\*\*) High-temperature regime means: 60°C Return and 80°C Flow of the boiler.

(\*\*\*) Low temperature means for condensing boilers 30°C, for low-temperature boilers 37°C and for other heaters 50°C return temperature (at heater inlet).

A) up to 75+75 m with swelling adapter available as option

B) up to 39+39 m with swelling adapter available as option

(\*\*\*\*) data not confirmed at the time of publication



Riello S.p.A.  
Via Ing. Pilade Riello, 7  
37045 Legnago (VR) – Italy  
phone +39 0442 630111

[www.berettaheating.com](http://www.berettaheating.com)



27021761 - EN - rev.00 02/2024



©2024 Carrier. All Rights Reserved.  
All trademarks and service marks referred herein  
are property of their respective owners.

Beretta reserves the right to change the information and specifications contained herein  
at any time and without notice. The contents and information contained herein are for  
informational purposes only and are not intended to provide legal or professional advice.  
Therefore, this document cannot be considered binding towards third parties.