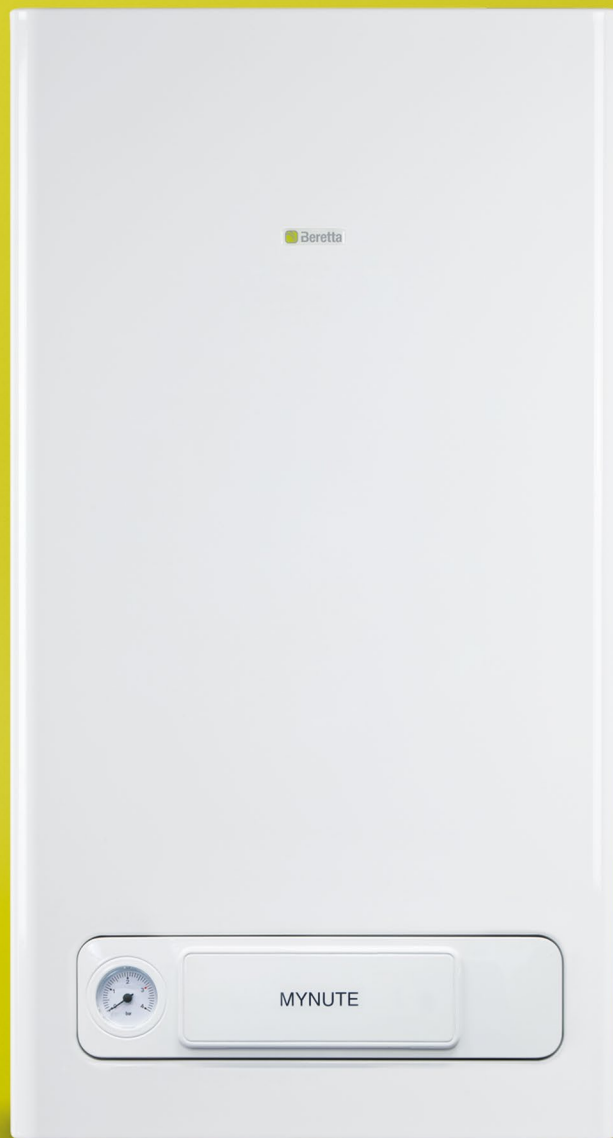


Mynute Lx



Wall -hung Standard boilers,
Low NOx

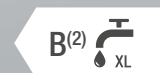


Mynute Lx, the innovation to facilitate replacement

The new Mynute Lx are available in open-chamber versions, with heat outputs of 24 kW and 28 kW. The boilers are equipped with a low-consumption circulator (6 m head - $EEI \leq 0.20$). **Designed following the Ecodesign guidelines of the European ErP Directive, they feature low emissions and a high quality standard of reliability and robustness.**

Display for viewing temperature and diagnostic codes. Prepared for connection to the BeSMART remote control (optional).

Thermoregulation as standard (external probe optional). Hydraulic fittings, gas and DHW taps (optional).



(1) Il range della classe di efficienza energetica di questa categoria di prodotti è compresa tra D e A+++.

(2) Il range della classe di efficienza energetica di questa categoria di prodotti è compresa tra F e A+.

ECODESIGN AND LOW EMISSIONS

Mynute Lx: high energy efficiency and low power consumption

With the entry into force of the European ErP Directive (26.09.2015), generators for the production of heating and domestic hot water are also classified through the appropriate energy label indicating the class. The compulsory labeling provides greater transparency on the characteristics of products that can be easily compared favoring the user in the search for those

with higher efficiency.

Consequently **even with boilers it is easier to contribute to achieving the objective of “20-20-20” set for the year 2020 which consists of: reducing greenhouse gas emissions (CO₂), increase the use of renewable energy by 20% and reduce energy consumption in EU countries by 20%.**

Last generation burner, low NOx

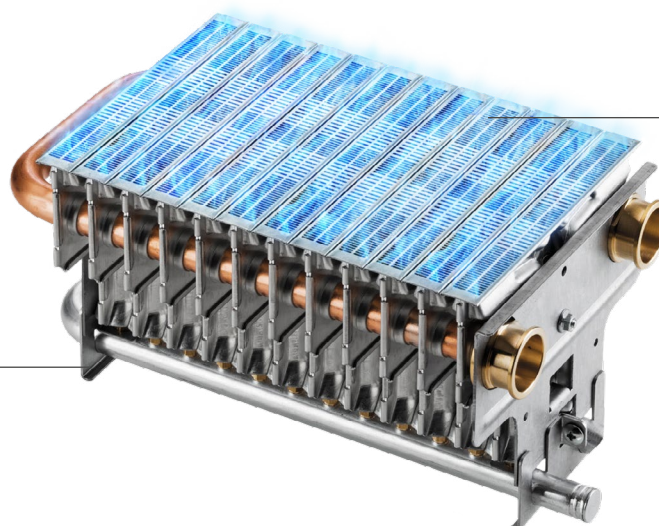
The recent application regulation requiring emissions of nitrogen oxides equal to or lower than 56 mg/kWh, which came into force on 26 September 2018, falls within the scope of the European ErP Directive.

Mynute Lx is able to satisfy the most demanding requirements in terms of low emissions, according to the regulation mentioned above, in order to make heating appliances increasingly efficient and less polluting.

Thanks to the **innovative Mynute Lx burner, of the**

hyperstoichiometric type, the flame is fed by an air-gas mixture in excess of that necessary for combustion, resulting in a very low flame temperature.

This characteristic, in combination with the **cooling of the burner through the water of the heating circuit**, produces a significant **lowering of the polluting values of carbon monoxide and nitrogen deriving from combustion**, such as to satisfy with full marks the new limits set by the legislation (EU Regulation 814/2013).



Hyperstichometric burner, water cooled

Wide flame modulation

TECHNOLOGY AND MANAGEMENT

Mynute Lx, simplicity and elegance

The new Mynute Lx features a simple and elegant aesthetic that fits into any living context. In fact, the control panel is elegantly covered by a flap, with a linear design, under which there is a digital display,

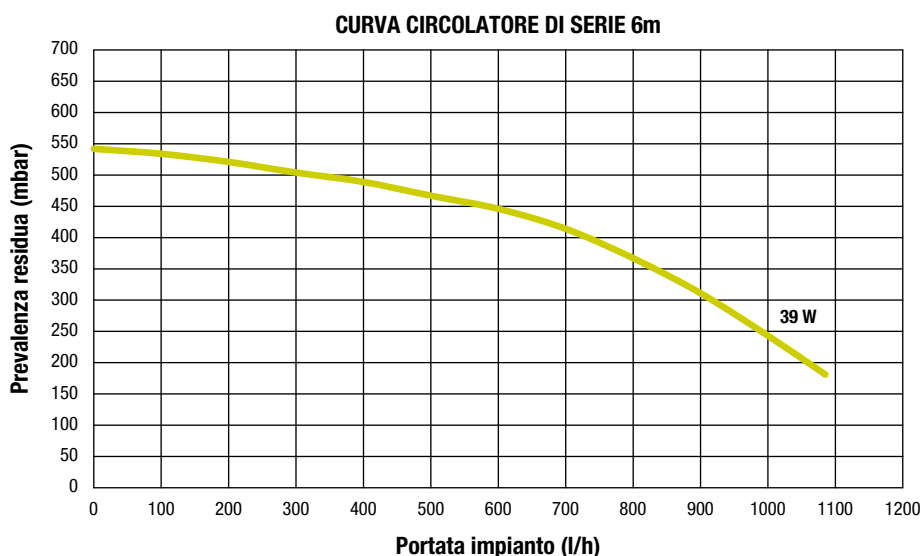
which makes all the information on the status of the appliance clearly usable, and two knobs, through which the end user can easily and intuitively access all the functions necessary for the use of the boiler.



KEY:

- 1 Hydrometer
- 2 Digital display
- 3 On/off/summer/winter/reset/heating temperature selector/ 'Clima Amico' System activation
- 4 Domestic hot water temperature selector/activation preheating

Low consumption circulator



Mynute Lx uses a synchronous circulator with low energy consumption, as required by the European ErP Directive. Thanks to this new technology, the electric motor of the circulator offers an Energy Efficiency Index of less than 0,20, which means significantly reduced electricity consumption.

TECHNOLOGY AND ADVANTAGES

Mynute LX, technology. A range suitable for multiple installation needs

DHW plate heat exchanger
with the possibility of preheating

3-way valve with
anti-lock cycle system

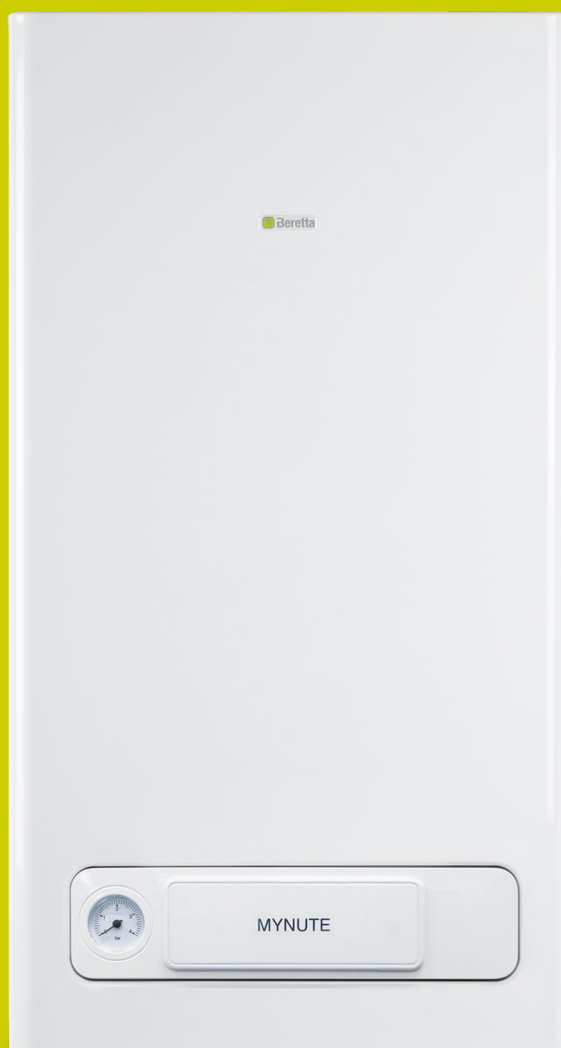
Flue gas control thermostat

By-pass on the heating circuit

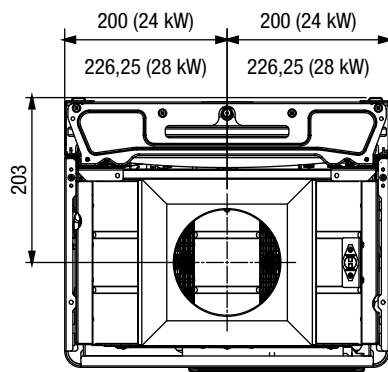
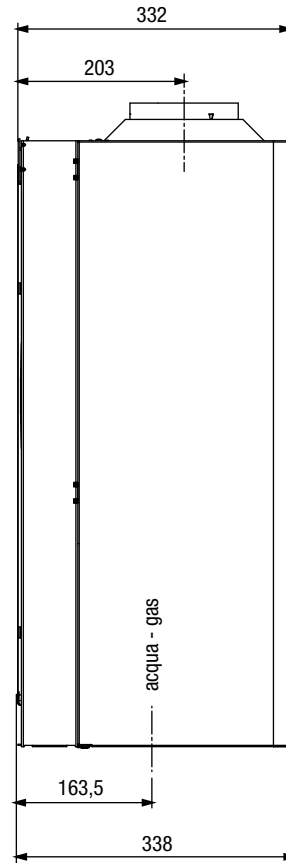
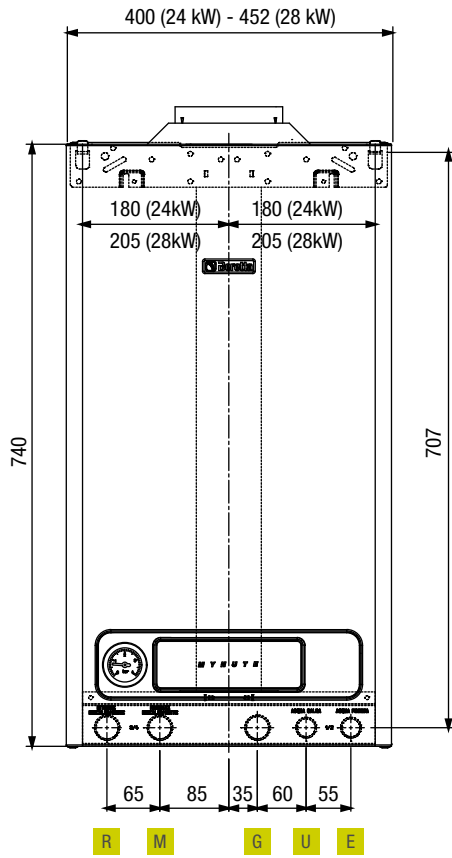
Electronic board with function
self-diagnostics and antifreeze protection

8 liter expansion vessel to manage
systems with high water content

Low-consumption ErP synchronous
circulator (6 m head - $EEL \leq 0,20$)
anti-lock cycle system



TECHNICAL DRAWINGS



KEY:

System

- R Return
- M Flow
- G GAS

Domestic water:

- U Outlet
- E Inlet

Refer to current regulations for all flue configurations.

TECHNICAL DATA

CHARACTERISTICS AND MODELS AVAILABLE	U.O.M.	MYNUTE 24 C.A.I. Lx	MYNUTE 28 C.A.I. Lx
Product code		20151436	20151438
ENERGY LABEL SPECIFICATIONS ACCORDING TO EUROPEAN DIRECTIVE ErP			
Energy efficiency heating	D → A+++ ⁽¹⁾	C	C
DHW seasonal energy efficiency	F → A+ ⁽²⁾	B	B
DHW load profile	-	XL	XL
Nominal heat output	kW	24	29
Seasonal heating efficiency	%	77	77
FEATURES			
Nominal heat input for heating/DHW	kW	26,70 / 26,70	31,90 / 31,90
Nominal heat output (80 - 60°C)	kW	24,06 / 24,06	28,87 / 28,87
Reduced heating / DHW flow rate	kW	10,70 / 9,00	14,00 / 9,00
Efficiency at Pn max - min (80 - 60°C)	%	90,1 / 86,4	90,5 - 88,3
Efficiency at reduced load 30% (50°C return)	%	89,2	89,5
Chimney losses with burner off	%	0,40	0,38
Chimney losses with burner on	%	8,43	7,93
NOx	Class	6	6
Supply voltage / frequency	Volt / Hz	230/50	230/50
Max electric power in heating	Watt	47	51
Electrical protection level	IP	X5D	X5D
HEATING OPERATION			
Maximum pressure and temperatures	bar / °C	3 / 90	3 / 90
Pump: max head available to the system / flow rate	mbar / liters/ h	243 / 1000	243 / 1000
Expansion vessel capacity	litres	8	8
DHW OPERATION			
Minimum/maximum pressure	bar	0,15 / 8	0,15 / 8
Quantity of hot water with $\Delta t = 25^\circ$	litres / min	13,8	16,6
Minimum domestic water flow rate	litres / min	2	2
CONNECTIONS			
Heating / gas	∅	3/4"	3/4"
DOMESTIC HOT WATER	∅	1/2"	1/2"
EXHAUST FLUE GAS			
Diameter	mm	130	140
BOILER DIMENSIONS			
Boiler dimensions (HxWxD)	mm	740x400x338	740x452x338
Net weight	kg	30	32
Gas versions available (*)		NG	NG

(1) The range of energy efficiency class of this products category is between D and A+++.

(2) The range of energy efficiency class of this products category is between F and A+.

(*) For gas transformation, contact authorized Beretta Technical Assistance Centers.

KEY:

C heating + domestic hot water

A open chamber

I Electronic ignition and ionization flame control



Riello S.p.A.
Via Ing. Pilade Riello, 7
37045 Legnago (VR) - Italy
tel. +39 0442 630111

www.berettaheating.com



©2025 Carrier. All rights reserved.
All product and service marks mentioned in this document are the property of their respective owners.

Beretta reserves the right to change the information and specifications contained in this document at any time and without notice. The contents and information herein have to be considered for informational purposes only and are not intended to provide legal or professional advice. This document, therefore, cannot be considered binding on third parties.

27024199 - EN - rev.00 - 05/2025