

EXCLUSIVO



 **Beretta**



EXCLUSIVE, THE START OF A NEW STORY

EXCLUSIVE, BERETTA'S UPDATED, TECHNOLOGICALLY- AND ELECTRONICALLY-ADVANCED CONDENSING BOILER RANGE, REPRESENTS A MILESTONE IN THE DEVELOPMENT OF BERETTA'S WALL-HUNG BOILER SOLUTIONS.

Thanks to the innovative Active Combustion Control (ACC), the Hybrid Ready feature and the new design, EXCLUSIVE offers exclusive advantages and flexibility in many residential installations.

From new building to refitting opportunities; from hybrid applications in multi-energy systems to simple single installations, EXCLUSIVE represents the choice for those who want to look beyond.

EVEN THOUGH THE FUTURE SEEMS FAR AWAY, IT IS ACTUALLY BEGINNING RIGHT NOW.

(MATTIE JT STEPANEK)

 Beretta

With the release of EXCLUSIVE, Beretta shows its continuous commitment to sustainability and the environment as the European Union works towards its **20-20-20** goals. EXCLUSIVE, in fact, is in line with the European directives and has been designed to maximize the unit's efficiency as well as its effectiveness in controlling emissions.

EUROPE 2020 STRATEGY



REDUCTION
OF CO₂
EMISSIONS

-20%



ENERGY
FROM
RENEWABLES

+20%



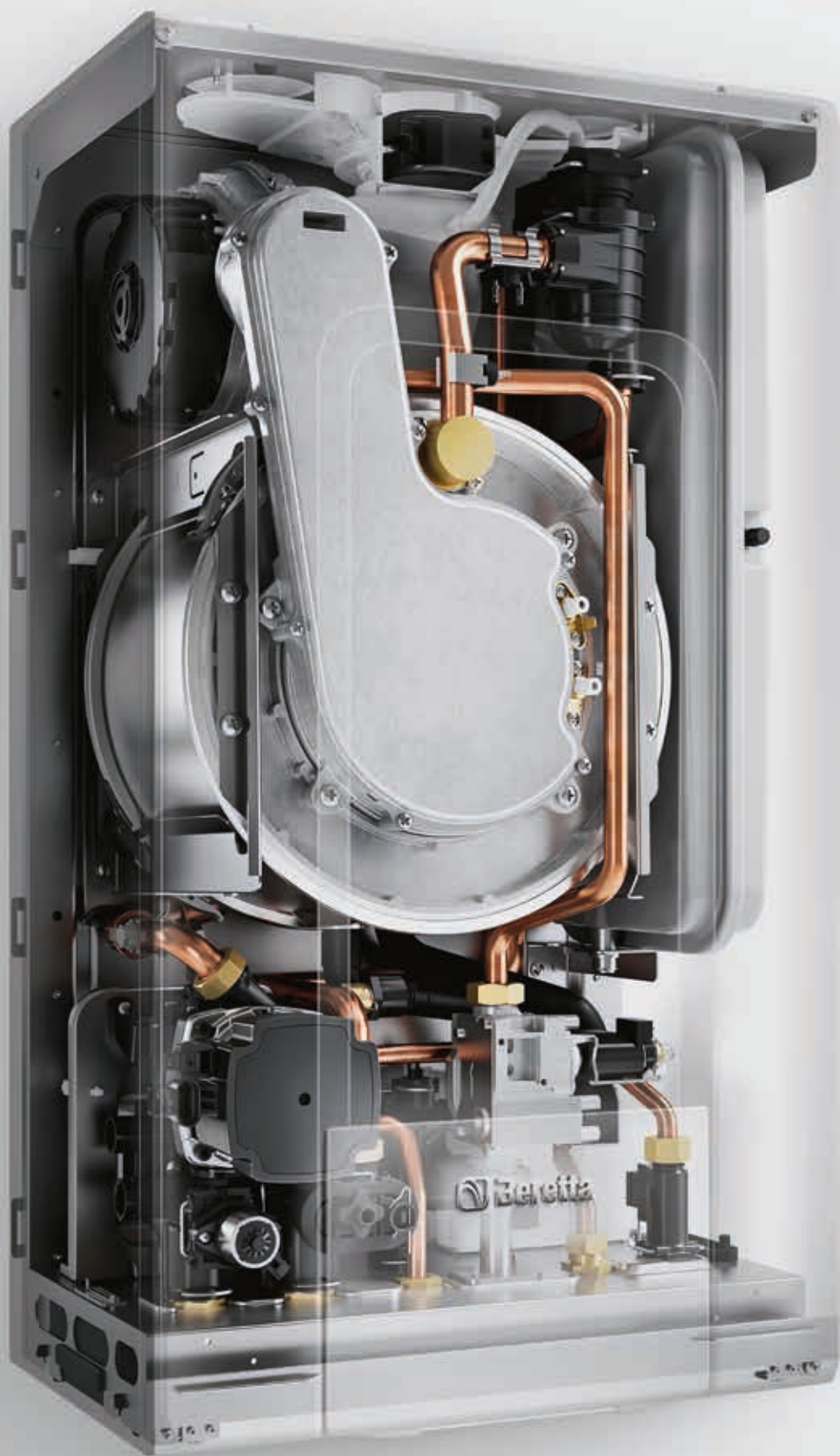
INCREASE
IN ENERGY
EFFICIENCY

+20%

 Beretta

TODAY'S
STATE-OF-THE-ART,
JUST AS BEFORE,
THE STYLE IS PURE
BERETTA





COMBI MODELS

25C

30C

35C

42C



HEATING ONLY MODELS

25R

35R

42R

EXCLUSIVE, A MILESTONE IN THE DEVELOPMENT OF BERETTA'S WALL-HUNG BOILER SOLUTIONS

Combustion and electronics, that are the heart and brain of EXCLUSIVE product line, designed in research and development Laboratories at our historic headquarters in Lecco (Italy), represent a turning point in Beretta's wall-hung boiler evolution and result from the spirit of innovation characterizing our brand since its origins.

The unique new design of EXCLUSIVE highlights Beretta's tradition of excellence and expertise, proven by 40 years of experience in the heating industry. In addition, the linear design modernizes the aesthetic lines of the first Beretta boiler models in a continuity of style in keeping with its name, Exclusive. This name has always characterized Beretta's top range, a leading product with exclusive features and benefits.

A+ system:
with BeSMART WiFi (optional)



CO MONITOR

CO boiler level constantly monitored and calibrated for maximum safety



UNIVERSAL APPLICATION

Indoor, outdoor and recessed in-box application



TEXT DRIVEN MENU

User-friendly interface for direct communication with TEXT and ICONS



QUICK & SIMPLE INSTALLATION

Casing removal is no longer required to make the electrical connections and calibrations



SELF- CALIBRATING

Auto-adaptability of the boiler to different types and compositions of gas - NO mechanical calibrations



HYBRID READY

Can be integrated via BUS in multi-energy systems to make boiler operation more energy efficient in relation with other energy sources



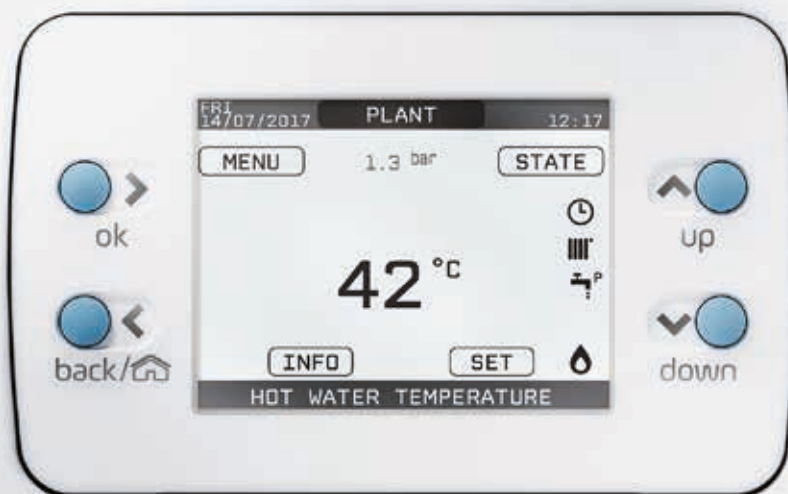
TEXT DRIVEN MENU

The control panel is one of the distinguishing and innovative elements of EXCLUSIVE product line. Exclusive functions can be accessed through a modern 3,5" backlit LCD display, which communicates with the user

through text and icons. Thanks to the intuitive push buttons, it is possible to easily navigate through EXCLUSIVE's parameters and settings, including programming the heating on and off times.



EXCLUSIVE's GREEN LED: A small LED light bar shows the boiler's operation status, reflecting on the casing a green light, if the boiler is operating regularly.



EXCLUSIVE FUNCTIONS

- › **PROGRAMMING BY HOUR**
HEATING CAN BE PROGRAMMED BY HOUR AND BY SINGLE ZONE
- › **DATE AND HOUR**
DISPLAYED ONSCREEN
- › **SMART FILLING**
FILLING ACTIVATION IN COMPLETE AUTONOMY AND SAFETY
- › **PRE-HEATING**
PRE-HEATING FUNCTION FOR DOMESTIC HOT WATER
- › **SYSTEM OPERATING PRESSURE**
DISPLAYED ONSCREEN
- › **SCHEDULED MAINTENANCE**
ADVISES THE NEXT DATE FOR THE BOILER'S MAINTENANCE

EXCLUSIVE EVERYWHERE



BeSMART

BeSMART, the smart WiFi thermostat by Beretta, is the quick and easy way to control your home heating from wherever you are from your Smartphone or Tablet, via a simple and intuitive App. EXCLUSIVE is compatible with all BeSMART's functions, also the most evolved ones.



ACTIVE COMBUSTION CONTROL

EXCLUSIVE's Active Combustion Control (ACC) system, designed and developed by Beretta, allows for functionality, efficiency and low emissions under any conditions. The ACC system uses an ionisation sensor immersed in the burner flame, which notifies the control board to operate the gas valve that regulates the fuel. The system keeps the air/gas mixture constant at optimum values throughout the power modulation (allowing the CO₂ readings to remain steady).

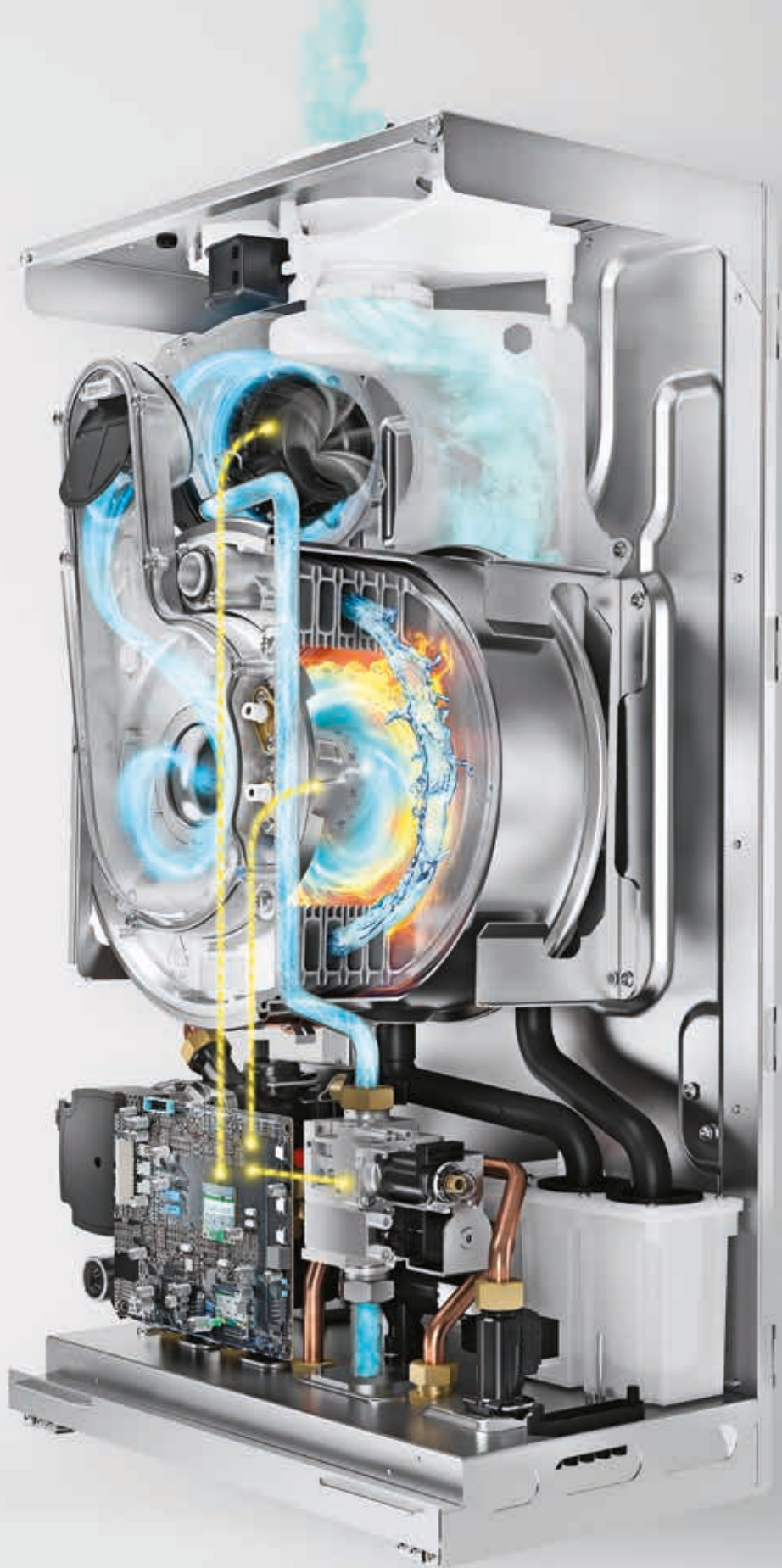
Exclusive's sophisticated control system provides the auto-regulation of the combustion, so there is no need for an initial calibration, enabling the boiler to operate with different gas compositions. The ACC system can also perform an auto-diagnostic operation that locks out the burner before the permitted upper emission limit is exceeded.

- [A] BURNER WITH IONISATION SENSOR
- [B] INTEGRATED ELECTRONIC BOARD
- [C] TRADITIONAL GAS VALVE WITH MODULATOR
- [D] MODULATING FAN WITH HALL EFFECT



ACC ADVANTAGES

- **AUTO-ADAPTABILITY** OF THE SYSTEM TO THE TYPE AND COMPOSITION (ALSO INSTANTANEOUS) OF THE GAS. GAS TRANSFORMATION KITS ARE NO LONGER NEEDED
- **NO MECHANICAL CALIBRATION** OR MANUAL INTERVENTION ON COMBUSTION IS REQUIRED ON THE BOILER
- **STEADY STOICHIOMETRIC** AIR/FUEL VALUE IN ANY CIRCUMSTANCE.
- **CONTINUOUS EMISSION CONTROL** IN COMPLIANCE WITH STANDARD LIMITS
- **GAS SAVING** COMPARED TO TRADITIONAL SYSTEMS, THANKS TO THE CONSTANT EFFICIENCY RATIO VS POWER MODULATION
- **EFFICIENCY AND RELIABILITY OVER TIME** THANKS TO SELF-TRAINING WITH COMPENSATION FROM ACC SYSTEM.





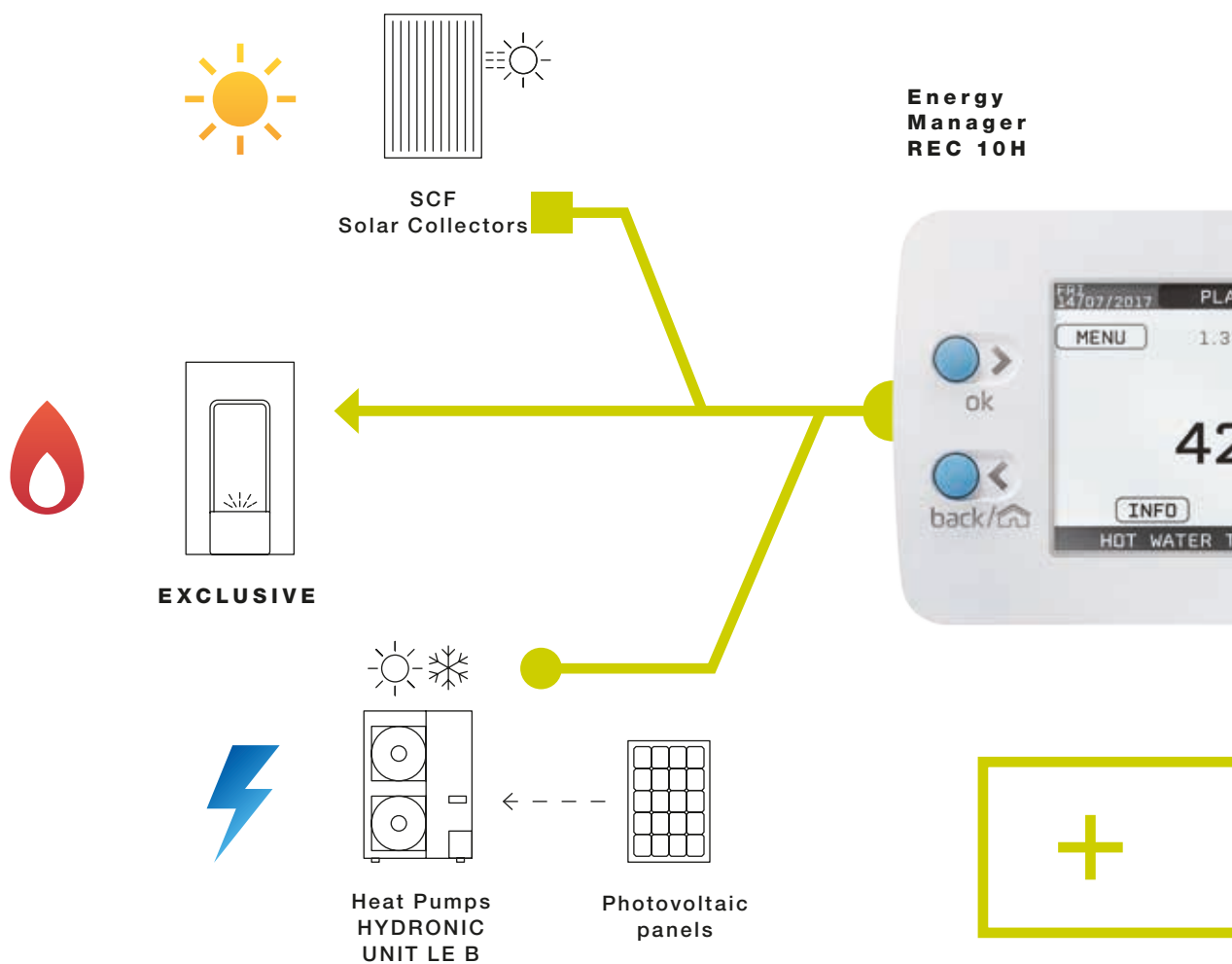
**HYBRID
READY**

ENERGY EFFICIENT CHOICE, FOR TAILOR-MADE COMFORT

EXCLUSIVE is a HYBRID READY solution. The boiler is a key addition to Beretta's HYBRID READY product line, which represent a new hybrid technology system, conceived and developed in the Beretta Research Laboratories.

The system, built to meet the present and future needs of integration and management of the different energy sources (gas/electricity/renewables) also includes the most innovative methods of energy storage and distribution.

GENERATION

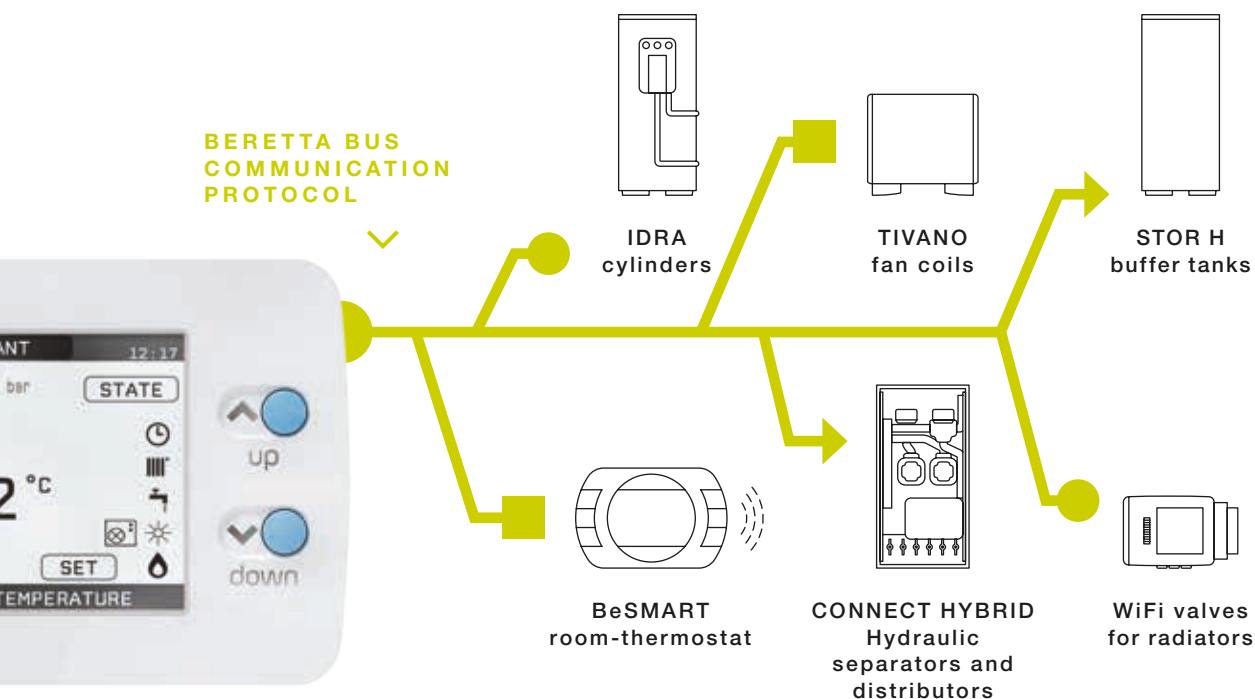


Provided with a new communication BUS, EXCLUSIVE is able to interact perfectly with the Energy Manager REC 10H, the “brain” of the system, which can constantly monitor the hybrid system in order to provide the best home comfort.

The Beretta Hybrid, distinguished by its modular approach to the world of multi-energies, is able to offer tailor-made comfort and evolve over time by introducing new components that will increase overall efficiency.

EXCLUSIVE, AS A HYBRID READY SOLUTION, IS THE IDEAL CHOICE FOR THOSE WHO WANT TO LOOK BEYOND AND INVEST IN A PRODUCT THAT CAN MEET POSSIBLE FUTURE REQUIREMENTS.

STORAGE AND DISTRIBUTION



**SAVING
COMFORT
GREEN**



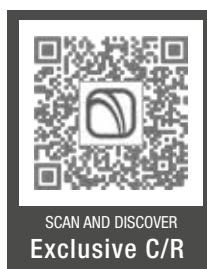
Domestic
Hot Water



Heating



Cooling



Trading Address:

Via Risorgimento, 23/A
23900 LECCO (LC) Italy
Tel. +39 0341 277111
Fax +39 0341 277263
www.berettaheating.com

In order to improve its products, Beretta reserves the right to modify the characteristics and information contained in this catalogue at any time and without prior notice. This catalogue, therefore, cannot be considered as contractually binding on third parties.

 **Beretta**