

## BERETTA: THE NEW RANGE OF NATURAL CIRCULATION SYSTEMS NB-SOL-A

A new product range for the production of domestic hot water, composed by a galvanized steel structure, antifreeze liquid and hydraulic kit, an enamelled double walled tank, a solar panel highly resistant to torsions and to atmospheric agents. These systems do not require pumps and/or electronic controls, thus offering a quick and easy installation.

### MAIN FEATURES:

Solar Keymark Certification



A simple and clean design, thanks to a finish treated in detail



An easy to install panel, thanks also to the low weight



A high-quality double walled tank



Electrical resistance from 1.5kW as standard



Excellent efficiency performance



RIELLO S.p.A.

Via Ing. Pilade Riello, 7  
37045 Legnago (VR) – Italy  
tel. +39 0442 630111

[www.berettaheating.com](http://www.berettaheating.com)



In order to improve its products, Beretta reserves the right to modify the characteristics and information contained in this catalogue at any time and without prior notice. This catalogue, therefore, cannot be considered as contractually binding on third parties.



©2023 Carrier. All Rights Reserved.  
All trademarks and service marks referred herein are property of their respective owners.

## DISCOVER THE NEW NB-SOL-A SYSTEMS



SOLAR THERMAL  
Natural circulation solar systems

# NB-SOL-A

A Carrier Company



27020063 rev.00 - EN - 04/2023

## ENAMELLED CYLINDER

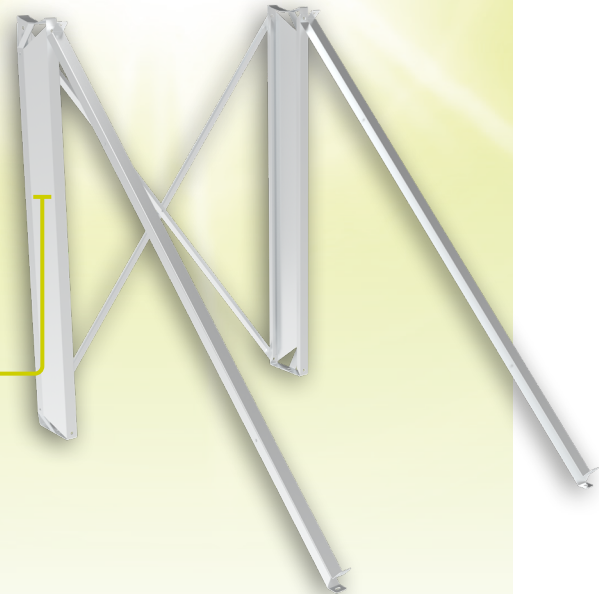
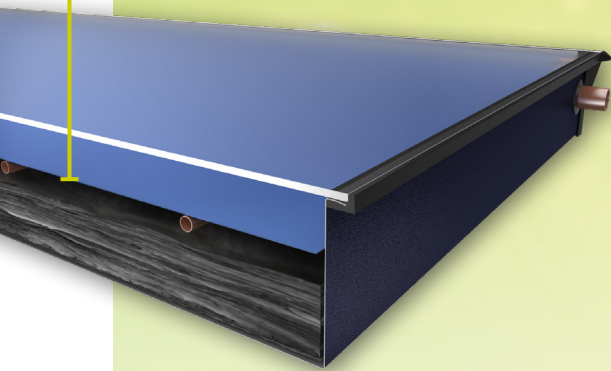
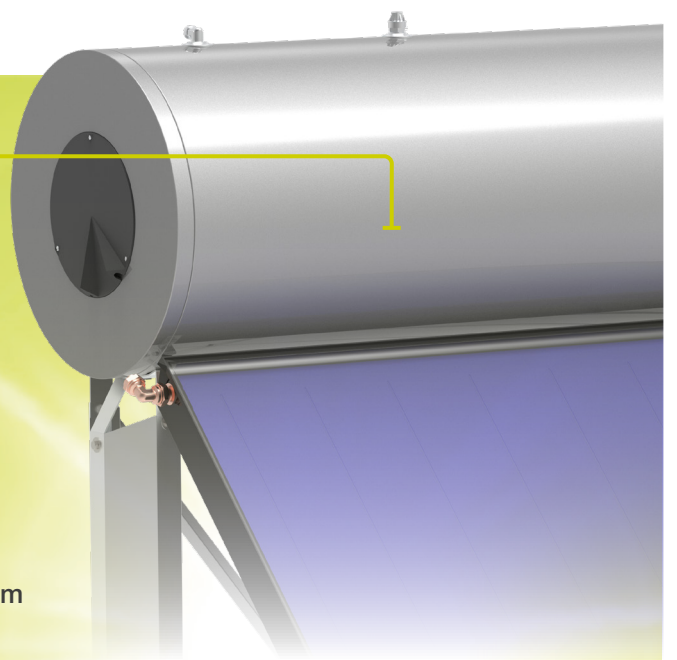
The system features a double walled enamelled cylinder, with expanded polyurethane insulation, an electric resistance of 1,5kW as standard for all sizes and a magnesium anode for increased corrosion protection.

## HIGHLY SELECTIVE ABSORBER

The absorber, made of highly selective aluminum and with a laser welded copper harp, gives the panel excellent efficiency performance.

## SUPPORT STRUCTURE IN GALVANIZED STEEL

The galvanized steel structure offers a high weather resistance and thus a greater durability. Available for both pitched roof and 45 degree flat roof.



## TECHNICAL SPECIFICATIONS

|   | NB-SOL-A<br>160/2,5                 | NB-SOL-A<br>200/2,5 | NB-SOL-A<br>200/4 | NB-SOL-A<br>300/4 | NB-SOL-A<br>300/5 |
|---|-------------------------------------|---------------------|-------------------|-------------------|-------------------|
|   | 2-3 persons                         | 2-3 persons         | 3-4 persons       | 4-5 persons       | 4-5 persons       |
| <b>SOLAR COLLECTOR</b>                        |                                     |                     |                   |                   |                   |
| Number of solar collectors                    | 1                                   | 1                   | 2                 | 2                 | 2                 |
| Total area (m <sup>2</sup> )                  | 2,5                                 | 2,5                 | 4                 | 4                 | 5                 |
| Absorber type                                 | high selective                      |                     |                   |                   |                   |
| Absorber material                             | aluminium surface / copper harp     |                     |                   |                   |                   |
| Glass type                                    | tempered glass (3,2 mm)             |                     |                   |                   |                   |
| Incidence angle modifier (K <sub>θ</sub> 50°) | 0,91                                |                     |                   |                   |                   |
| <b>CYLINDER</b>                               | 151                                 | 192                 | 192               | 295               | 295               |
| Cylinder material                             | DC-03 Steel (2,5 mm)                |                     |                   |                   |                   |
| Protection against corrosion                  | Enamelled cylinder                  |                     |                   |                   |                   |
| Insulation                                    | Polyurethane foam (thickness 50 mm) |                     |                   |                   |                   |